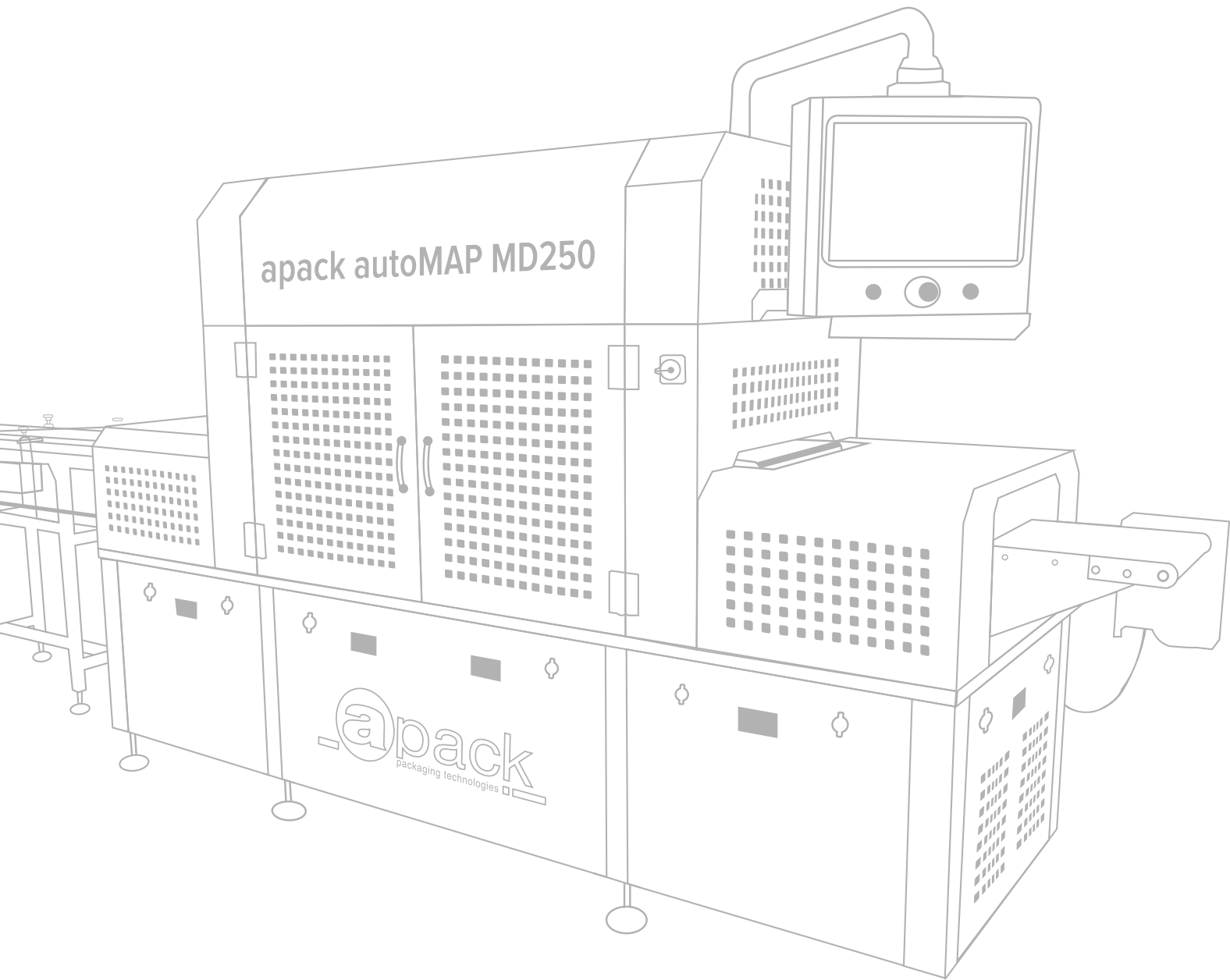


MORE THAN JUST  
**PACKAGING**





**Innovative, flexible, professional and comprehensive solutions for your exact needs...**



APACK specialises in food packaging, developing solutions and technologies incorporated in packaging machines and providing packaging equipment and technical support for leading domestic and foreign companies worldwide.

We are dedicated to presenting food in its most natural form, without the use of preservatives and without compromising the taste or nutritional quality. Since it was founded in 2005, APACK has been providing solutions tailored to the client's needs, offering the longest possible shelf life and minimum cost.

APACK manufactures its packaging machines with unique designs, with even the smallest parts produced in its own facilities, which comply with international standards and are fully certified.



Besides manufacturing packaging machinery and turnkey packaging solutions, APACK also offers a variety of rigid packaging products as part of a complete packaging system, which includes a number of portion-size packaging options, specialty multi layered packaging films and sophisticated rollstock materials for a wide range of applications.

**Non-stop Research & Development for continuous improvement...**

APACK carries out R&D work regularly by collaborating with scientific research institutions, universities and a number of R&D laboratories around the world. So far, more than 800 scientists and technical staff from various countries have been involved in creating and implementing our around the globe.





# APACK PACKAGING MACHINES

## OVERVIEW

# APACK SOLUTIONS

### Packaging Machines

- perFORMA Series Fully Automatic Packaging Line (Thermoforming)
- autoMAP Series Fully Automatic Tray Sealer (MAP, CAP)
- MAP25 Series Semi Automatic Tray Sealer (MAP, CAP)
- DOT Series Desktop Manual Tray Sealer
- VC/VCM Series Single or Double Chamber Vacuum Machines

### Packaging Technologies

- Tray Sealing
- Modified/Controlled Atmosphere Packaging (MAP) (CAP)
- Skin Packaging
- Thermoforming
- Vacuum Packaging

### Flexible Film Materials

- Standard Films
- Barrier Films
- Retort Films and Pouches
- Resealable Bags and Doypack Pouches
- Multilayer Coex Films
- Paper Films
- Films for Pasteurisation, Sterilisation and Microwave Applications
- Peel - Unpeel and Antifog Options

### Value-Added Products

- Convenience Food Products
- On-the-Go Packaging
- Lifestyle Foods
- Long Shelf Life Without Preservatives
- Medical Supply Packaging



### User-friendly solutions...

The most important feature of APACK's range of packaging machines is that they can be improved according to the demands and needs of the customer. User-friendliness, reliability, maintainability and safety are at the forefront of APACK's engineering strategy and support our dedication to quality. Every piece of APACK equipment is manufactured internally and is protected by APACK's worldwide warranty and 24/7 online technical support service.

Here at APACK, our philosophy involves being open to new ideas, responding to new trends and market conditions, and making improvements to those products and services we already offer; we are here to offer solutions for all your food-packaging needs.

All APACK machines are made of AISI 304 stainless steel. Also, our high-end automatic machines can be controlled with a touch-screen and monitored remotely online.



# DOT/tableTOP

## Desktop Tray Sealers

APACK's proprietary design (utility model registered) DOT series and tableTOP series tray sealers are an exact solution for small-size producers, retailers, restaurants and shops.

The DOT S/SC is inexpensive, compact, easy to use and transport, hygienically designed, and is capable of performing multiple jobs under a single roof. Both sealing and cutting are completed simultaneously in preformed trays.

DOT series machines are made of stainless steel and cast-iron materials, and are equipped with a digital temperature controller. Suitable for both hot and cold foods with the appropriate packaging materials. After thermosealing with SC models, operators do not need to cut leftover film parts. With a little trial and error, you can reduce flaws and get perfect results.

APACK's desktop tray sealers include the DOT S (SEAL), DOT SC (SEAL&CUT) ve DOT E (EXTENDED), tableTOP S (SEAL), tableTOP SC (SEAL&CUT) and tableTOP E (EXTENDED), offering a wide range of solutions.

DOT & tableTOP Technical Specifications	
STANDARD TRAY SIZES	37x187 mm 144x190 mm 180x230 mm
TRAY HEIGHT	10-100 mm (single or multi compartments)
DIMENSIONS	280 x515x360 mm
WEIGHT	24 kg
POWER	230V AC, 1kW max.

DOT and tableTOP max. Tool Sizes		Film Width
1.1 tool	200x270 mm	Up to 240 mm
2.1 tool	90x270 mm	240 mm
1.1 tool	max Ø 150 mm	>330 mm

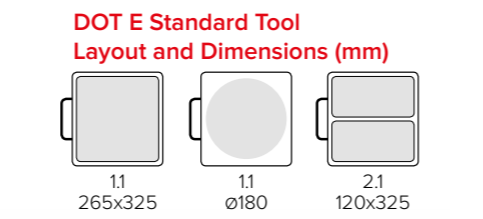
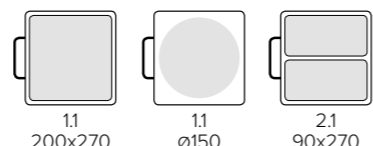
DOT and tableTOP Extended max. Tool Size		Film Width
1.1 tool	265x325 mm	330 mm
2.1 tool	120x325 mm	330 mm
3.1 tool	70x325 mm	330 mm
2.2 tool	120x150 mm	330 mm
1.1 tool	max Ø 180 mm	330 mm

Types of Films	
PE PEEL	Thermosealed to almost all types of trays
CPP PEEL	Thermosealed to PP Trays
OPET HS	Thermosealed to DOT, CPET, PAPER and Aluminium Trays

Tray Types			
monoPET	PET/PE	PS	ALUMINIUM
monoPP	PAPER	cartoMAP	CPET



DOT Standard Tool Layout and Dimensions (mm)



DOT E Standard Tool Layout and Dimensions (mm)



# MAP25

## Semi-Automatic Tray Sealer



The MAP25 is ideal for small or medium-sized food producers. Its stainless-steel body and sturdy design allow operators to move the device around easily without changing settings. Cleaning and maintenance are very easy and it easily fits most processing floors with its compact design. Touch-screen controls enable operators to follow packaging steps and view any error messages on the screen. The device can be adjusted for all types of trays and films. Its multiple-program memory assists operators in switching between packaging programs for various products. The MAP25 has a versatile, mould quick-change function for different tray sizes, and gradual vacuum and film sealing allows for the removal of gasses inside the package.

### MAP25E (Extended)

The Extended model is designed to use large-size trays. APACK produces this model in various sizes, at the same time providing the option to change tray sizes with different plates and hold the larger vacuum pumps for increased production speeds.

### MAP25DS (Double Station)

The Double Station model is designed to double production capacity. This model is built on the body of the base model that is combined with two drawers.

### MAP25 Skin

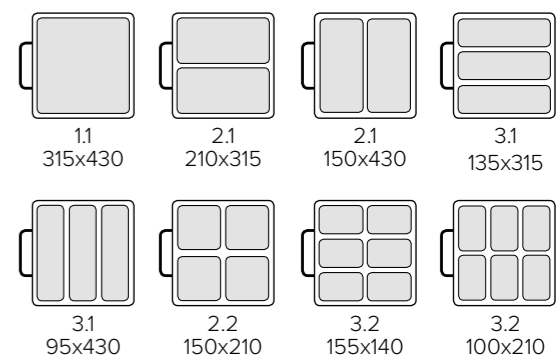
Both the top film and the device's technology are different. The skin packaging height can be set according to preference between 10mm and 35mm in products placed in trays. The skin packaging process wraps the cover film itself firmly but gently around every contour of the product without distorting its shape inside the food tray.

### MAP25X (Custom)

If you have to use single, proprietary-design, large and heavy trays for your product, this model is a low cost alternative for your production. When the mould is placed on the product carriers, sliders automatically run and seat the product in the mould compartment. Once packaging is complete, the product comes out of the mould, and the slider mould pulls the product out to the conveyor belt.



MAP25 Standard Tool Layout and Dimensions (mm)



MAP25 Technical Specifications	
POWER	400V, 50Hz 3/N/PE 6.0 kW Max
VACUUM PUMP	60 m <sup>3</sup> /h
AIR PRESSURE	6 bar (dry)
COMPRESSED AIR CONSUMPTION	7 nl per cycle, 30 nl/min
GAS PRESSURE	2-6 bar
CONTROL PANEL	24 Line PLC
DIMENSIONS (W/L/H)	650/1090/1720 mm
WEIGHT	450 kg
FILM WIDTH	470mm max / 76mm max
CAPACITY	2-6 cycle/min

MAP25 Tray Options	
TRAY OPTIONS	monoPET, monoPP, monoPS, PVC, Paper
HEAT RESISTANCE TRAYS	DOT (Barrier Foam) -40/+200 °C CPET-APET-AMPET-ALU -40/+220 °C Lacquered ALU Convenient for Microwave
Multi Layer	PP/EVOH/PP PET/PE PVC/PE PS/PE PVC/PE/EVOH/PE
Environmental	PLA Recycle

# autoMAP 100-200

## Fully Automatic MAP Packaging Lines



The autoMAP 100-200 and miniseries packaging lines will meet all your packaging needs with fully automated systems.

The production lines incorporate the following stages: feeding the trays, filling the product, weighing, sorting, MAP sealing, labelling, collection and storage.

The stainless-steel body and hygienically designed conveyor belts and moving parts allow for hassle-free cleaning and maintenance. This series also allows for the use of single and multiple trays.

Gradual vacuum application allows all gasses to be removed from the package. Liquid foods, sauces, dressings and hot-filled products can be hermetically sealed with ease.

### Achieve excellence with the Functional Control System

Thanks to the touch-screen panel, every step of the packaging process can be controlled easily. The automation unit, equipped with PLC control circuits, monitors and controls the processing line and provides immediate alerts of possible faults, misuse and equipment malfunctions, thus protecting the systems. Multiple program memory makes it easy to switch to different packaging types. All procedures can be adjusted according to various tray and film sizes.

#### autoMAP 100Mini

With its compact design, the autoMAP 100Mini fits most processing spaces and still has all the features of the autoMAP 100 series. The autoMAP 100Mini provides great convenience in terms of both budget and size.

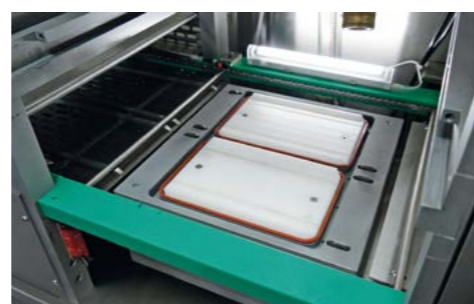
Full automation add-ons such as online-access, fully automatic filling, plate feeding, weighing, labelling, etc. can be applied to all autoMAP series.

#### autoMAP 100E (Extended)

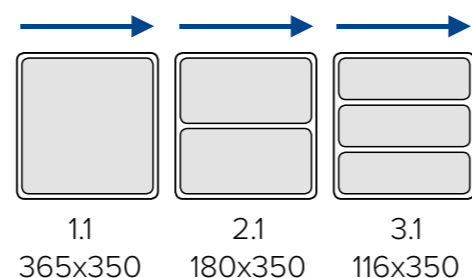
In the autoMAP 100E, the volume and dimensions of the standard tray mould structure of the autoMap 100 are expanded to accommodate larger packages. Machine dimensions can be adjusted based on the client's packaging preferences and needs.



autoMAP 100Mini



#### autoMAP100 & Mini Standard Tool Layout and Dimensions (mm)



#### autoMAP200E (Extended)

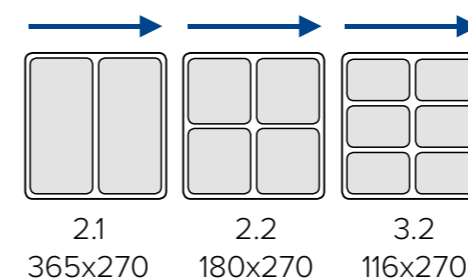
The structure, volume and mould measurements of the standard autoMAP 200 are extended for larger packages. Machine sizes, carriers and the operating structure are designed to meet your packaging needs.



autoMAP 200



#### autoMAP200 Standard Tool Layout and Dimensions (mm)



autoMAP 100-200 Technical Specifications	
POWER	400V, 50Hz 3/N/PE, 4-8 kW Max
VACUUM PUMP	100-160 m <sup>3</sup> /h
AIR PRESSURE	6 bar (dry) 305nl/min
PROTECTIVE GAS	2-6 bar
FILM WIDTH	420 mm
ROLLSTOCK DIAMETER	76 mm
CAPACITY	8-14 operations/min
OPTIONS	Liquid and/or dust filter
DIMENSIONS (W/L/H)	900/2800-3675/1663 mm
LOADING SECTION	1.5-3.0 mt
WEIGHT	1200 kg

autoMAP 100Mini	
DIMENSIONS (W/L/H)	985/2100/910 mm
LOADING SECTION	700 mm
WEIGHT	800 kg

# autoMAP MD250

## Fully Automatic MAP Packaging Line



In packaging systems, as production capacity increases, the volume of products processed by machines grows and the extent of their functions also increases. More comprehensive and complex systems come into play, and many machines that automatically progress and are interconnected start to work together in production phases. At this point, due to this kind of increase in capacity, we recommend the autoMAP-MD250 High Speed Full Automatic Packaging Machine Line to our customers, as it can work together with any kind of automatic production facility.

The production line starts with tray feeding and includes all further production phases such as filling, weighing, sorting, MAP closing, labeling, collection and storage.

The body of the machine is made entirely of AISI 304 stainless steel. Conveyor belts and moving parts are all made from hygienic materials suitable for food and medical production. It is very easy to handle, maintain and clean the machine. All kinds of products, including solid, liquid, paste-like, granular and powdered, can be packaged. The machine is suitable for single-compartment and multi-compartment plates.



Thanks to our exclusive software, gradual vacuum processing is easily carried out in autoMAP MD250 machines, removing all the oxygen within a package and product.

The transport of plates to the welding area and their subsequent transfer to the outlet conveyor is performed with logic-controlled robotic arms. Thanks to Motion Control software, all parts of the machine work in harmony with systematic continuity. Drivers for film winding, filming and carriage and various moving parts are all equipped with servo motors. This provides macro-level precision in machine operations.

autoMAP MD250 can use different molds for different products. Mold replacement can be done quickly and easily by authorized and trained personnel.

Thanks to the large touchscreen, every step of the packaging process is easily controlled. Vacuum, gas and sealing operations applied to packaging can be fully controlled, as the operation of each plate compartment on the mold is monitored separately.

We produce custom solutions for you, depending on the layout and size of your production area and other production machines.

autoMAP MD250 series machines have international conformity certifications.

*autoMAP MD250 is dedicated to the memory of our esteemed friend Muharrem Demir.*

### autoMAP-MD250

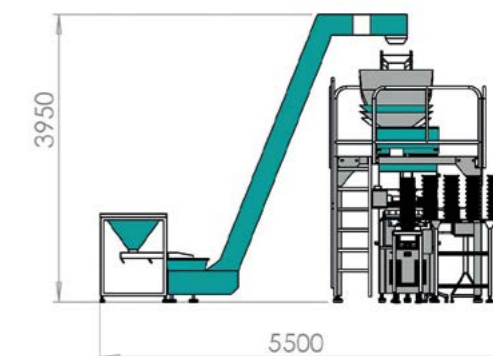
- Certifications of conformity to international industrial standards
- Fully automated operating system
- Suited to high production capacity
- Vacuum and gas systems
- Gradual vacuum function
- Very simple use
- Remote access capability via internet
- Compliance with all kinds of packaging accessories (printers, statistics, etc.)
- All kinds of printed / imprinted film can be used
- Modifiable mold
- High quality workmanship
- Easy to maintain and clean
- Can be adjusted to all kinds of products
- Best for food packaging

### USES

- SOLID / LIQUID READY FOOD (soups, sauces, pastes, appetizers etc.)
- DELICATESSEN (Cheese, appetizer, snacks, pickles, etc.)
- PEELED AND CLEANED FOOD
- SALAD - VEGETABLES - FRUIT
- GRANULATED AND POWDERED PRODUCTS
- FROZEN PRODUCTS
- MEAT AND MEAT PRODUCTS
- DRIED FRUIT - DRY FOOD
- SEAFOOD PRODUCTS
- PASTRIES - PIES - DESSERTS
- MEDICAL PRODUCTS
- MILITARY LOGISTICS

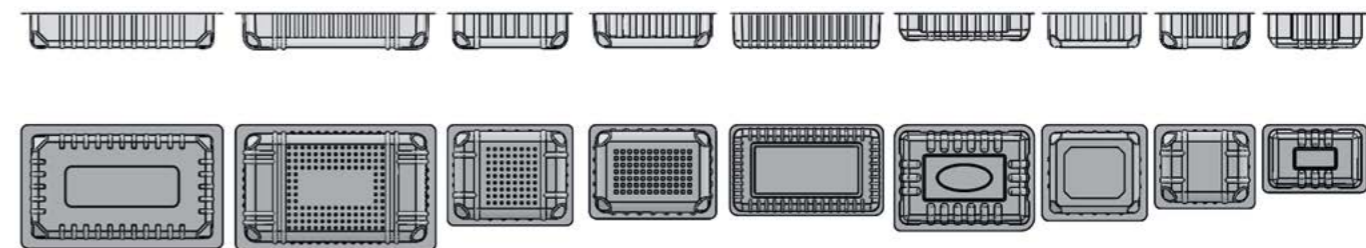
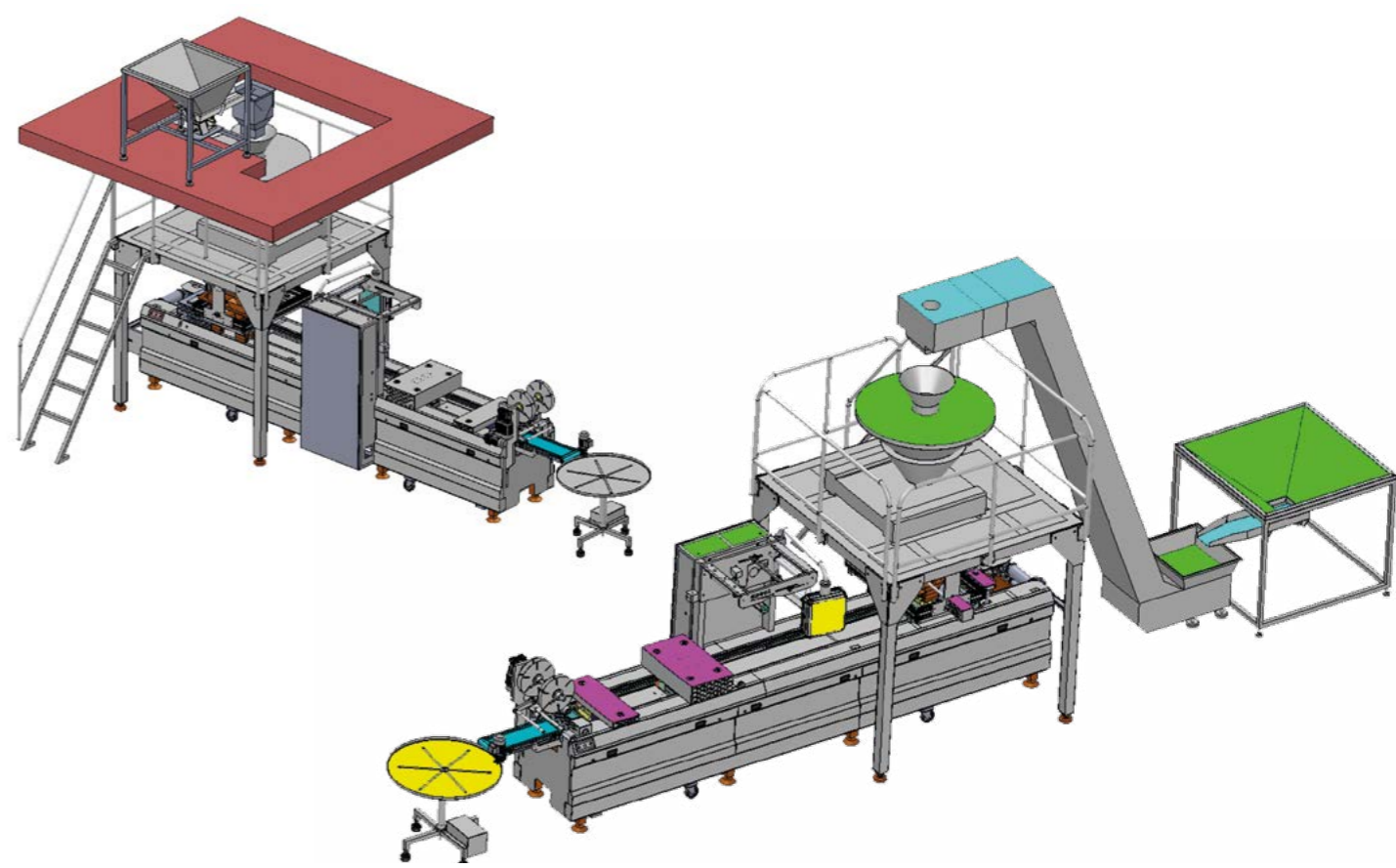


autoMAP-MD250 Technical Specifications	
POWER	200-400 V, 50-60 Hz, 3/N/PE
POWER CONSUMPTION	min 4.0 – max 8.0 kW
VACUUM PUMP	205-305 m <sup>3</sup> /hour
COMPRESSED AIR	6 Bar Homogeneous and Dry Air
COMPRESSED AIR CAPACITY	200-300 nl/min.
PRESERVATIVE GAS PRESSURE	2-6 Bar
PRESERVATIVE GAS CAPACITY	35 nl/operation
FILM WIDTH	320 mm
FILM ROLL INTERNAL DIA.	76 mm
FILM ROLL EXTERNAL DIA.	300 mm
CAPACITY	10-15 operations/min
OPTIONAL	Liquid / Dust Filter
CONTROL CIRCUIT	PLC (Programmable Logic Control)
CONTROL PANEL	Touchscreen HMI (Human Machine Interface)
LOADING AREA	1.5-3.0 m
WIDTH	900 mm
LENGTH	Machine: 2,900 / with Conveyor: 5,100 mm
HEIGHT	2,000 mm
WEIGHT	Approx. 1,200 Kg



# perFORMA 320-360-420-460-520-560

## Fully Automatic Thermoform and MAP Lines



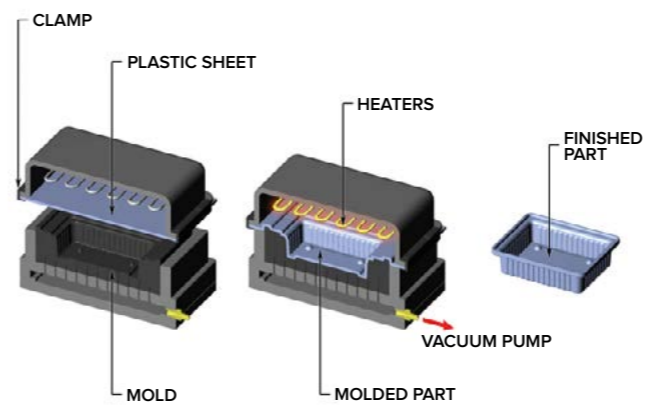
The perFORMA series includes fully automatic form, fill and seal packaging lines. Our Thermoforming systems are comprised of tray-forming, automatic weighing - dosing of liquid / granule / powder filling, product vibration, film sealing, cutting and labelling sections within a single processing and packaging line. Product collection and sorting are also incorporated in the system. The perFORMA series models are able to work with all kinds of top and bottom webs. Depending on the requested packaging structure, perFORMA series models are capable of both MAP and Vacuum packaging applications. Double-acting form or homogeneous piston form units can be fitted to the production line.

perFORMA series models can produce economical packages in high volumes using mono / laminated / foam films. Gradual vacuum application allows for all gasses to be removed from the package. Liquid foods, sauces, dressings and hot-filled products can be hermetically sealed with ease.

### Easy to Operate, Safe, and Simple to Use

The touch-screen panel easily controls every step of the packaging process. The automation unit, equipped with a number of PLC control circuits, monitors and controls processing line functions, provides immediate alerts of possible faults, misuse and equipment malfunctions, thus protecting the system. Multiple program memory makes it easy to switch to different packaging types. All procedures can be adjusted to various tray and film sizes.

All perFORMA thermoforming machines can be easily controlled with the touch-screen and monitored remotely online.



perFORMA Technical Specifications	
POWER	400V, 50Hz, 3/N/PE min 4.0 – max 14.0 kW
VACUUM PUMP	60-205 m³/hour
COMPRESSED AIR	6 Bar Consistent and Dry Air
COMPRESSED AIR CAPACITY	400-600 nl/min
PRESERVATIVE GAS PRESSURE	6 Bar
TOP FILM WIDTH	330/370/430/470/530/570 mm
TOP FILM ROLL INTERNAL DIA.	76 mm
TOP FILM ROLL EXTERNAL DIA.	300 mm
BOTTOM FILM WIDTH	320/360/420/460/520/560 mm.
BOTTOM FILM ROLL INT. DIA.	76 mm
BOTTOM FILM ROLL EXT. DIA.	300 mm
COOLING WATER	60-80 litre/hour
COOLING WATER CAPACITY	6000kcal/hour
PNEUMATIC SYSTEM	Winmann / Fatek / Masterworks
ELECTRICAL MOTORS	Varvel
CAPACITY	8-14 operations/min
OPTIONAL	Liquid / Dust Filter
CONTROL CIRCUIT	24 VDC
CONTROL PANEL	BEIJER COLOR PLC TOUCHSCREEN
LOADING AREA	2.0-3.0 mt
WIDTH	6000 mm
LENGTH	1800 mm
HEIGHT	1070 mm
WEIGHT	Approx. 1500 kg

# VC 600 Single Chamber Vacuum Machine



APACK's VC600 is a single-chamber trolley vacuum packaging machine, which comes with a compact design and heavy-duty castors; the operator can move the equipment around without changing any machine settings.

The body of the VC600 is made entirely of stainless steel, and the lid is a transparent, impact resistant, high-quality PMMA material. Quickly-changeable insert plates allow the vacuum chamber height to be adjusted. The control panel helps to adjust the amount of vacuum or gas and vacuum time. Vacuuming can be easily performed without damaging the product. Tighter packaging and better presentation are easily achieved without drip loss or air-bubble formation. The VC600 also has a gas injection (or gas flush) option. After the vacuum process is complete, prior to sealing, a preferred gas or gas mixture can be injected into the package.

Removable sealing bars from the vacuum chamber allow the operator to easily clean the device for optimal hygiene. The VC600 is specially designed to be used in small to medium-sized businesses and offers optimal capacity at an attractive price.

The VC600 single-chamber vacuum packaging machine has many international certificates of conformity.

Gas flushing unit and pressured sealing are machine standard.



## VC600 Technical Specifications

POWER	220VAC 1PH, 50Hz. Max. 5kW
VACUUM PUMP	54 m <sup>3</sup> /hour
VACUUM CHAMBER DIMENSIONS	620 x 600 x 170 mm
SEALING BAR	600 x 5 mm
CONTROL PANEL	Digital
GAS FLUSHING	(N <sub>2</sub> ,CO <sub>2</sub> ,O <sub>2</sub> )
BODY	AISI304 Stainless Steel
WEIGHT	160 kg



# VCM 750 Single-Chamber Vacuum Machine



The VCM750, a double-chamber vacuum packaging machine (floor-standing with rolling casters) is made of stainless steel. The highly durable cast-iron alloy lid, where the sealing mechanism is mounted, and the stainless steel housing and flat working plate provide a sturdy structure.

The machine has a standard double-sealing bar for packaging several products at the same time in each chamber. The VCM750 has easily removable silicon holders for cleaning the working plate. The digital control panel helps to adjust the amount of vacuum or gas and vacuum time. The machine's programs are easy to run and can be set as a default sequence for quicker and continuous operation. Hassle-free vacuuming without damaging the product, drip-loss or air-bubble formation, as well as tighter packaging and better presentation are easily achieved. The VCM750 double-chamber vacuum packaging machine has a number of international certificates of conformity. The gas flushing unit and pressure cold welding features are standard for this product.



## VCM750 Technical Specifications

POWER	220 / 380 VAC 3PH, 60Hz. Max. 7kW
VACUUM PUMP	120 m <sup>3</sup> /hour
VACUUM CHAMBER DIMENSIONS	780 x 720 x 180mm
SEALING BAR	4 x 750 x 10 mm
CONTROL PANEL	Digital
GAS FLUSHING	(N <sub>2</sub> ,CO <sub>2</sub> ,O <sub>2</sub> )
BODY	AISI304 Stainless Steel
WEIGHT	350 kg





## APACK offers solutions for all your food products



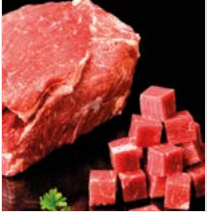
### CONVENIENCE FOODS

Pre-prepared food applications are becoming increasingly valuable in modern-day life.



### FRESH-CUT FRUITS AND VEGETABLES / FRESH SALADS

Packaging solutions for cleaning and sorting fresh fruits and vegetables



### MEAT AND MEAT PRODUCTS

Applications for converting fresh meat and meat products into ready, high-quality and hygienic food products with a long shelf life.



### SEAFOOD

Practices to prepare seafood from both natural and aquafarms for case-ready products



### DRY FOODS-SNACKS

Packaging applications for dry food and appetizers that are an essential part of traditional cuisines.



### CONDIMENTS, SAUCES, PUREES, OLIVES

Packaging solutions for rich sauces, purées, appetisers and entrées.



### DAIRY PRODUCTS

Packaging systems for cheese, yogurt, ayran and similar dairy products



### BAKERY PRODUCTS-DESSERTS

Applications for raw/cooked products derived from grain flour that are ready to eat, pretreated or require further processing.



### SKIN PACKAGING

A vacuum packaging concept that protects the product and fits around it like a second skin. Extends product shelf-life, retains moisture and enhances product appearance



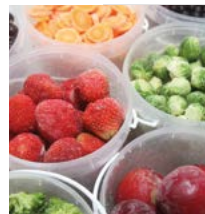
### SLICED PRODUCTS

Packaging solutions for ready-to-eat sliced and portioned foods



### SOUS-VIDE

Next generation "vacuum cooking" applications



### FROZEN FOODS

Applications for frozen precooked or raw foods